



# SHRI MRITYUNJAYA COLLEGE OF ARTS AND COMMERCE

**DHARWAD - 580 008**

E-mail : [smcollegedarwad@gmail.com](mailto:smcollegedarwad@gmail.com)

Website : [www.smcollegedarwad.org](http://www.smcollegedarwad.org)

**ReAccredited with "B" Grade by NAAC**



**PROSPECTUS**

**2016-2017**



### **Vision**

“Global conservation and Human Progression Through Education”

Imparting Meaningful and value-based education to sharpen mental skills to enable and energies.

The creative talents of the students to excel as responsible citizens of the NATION..... GLOBE.



### **Mission**

- ❖ Identifying the hidden talents of the students.
- ❖ Mould them to shoulder the societal requirements.
- ❖ To equip them to face the global challenges.



### **Objective**

- ❖ To provide ample opportunities and motivate the learner to exhibit their talents.
- ❖ To inspire and involve all stakeholders to play their roles constructively.
- ❖ To strengthen the emotional and spiritual quotients of the learners transform them as dynamic leaders to Contribute to the global welfare.



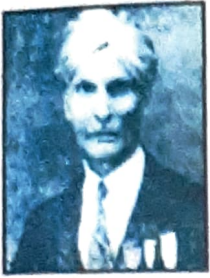


**PUJYA SHRI MRITYUNJAYA SWAMIJI**

**Murughamath, Dharwad**

# KARNATAK LINGAYAT EDUCATION SOCIETY, BELGAUM

## FOUNDER MEMBERS



SARDAR V. G. NAIK  
BAHADUR DESAI, CHACHADI



RAO BAHDUR R. C. ARTAL

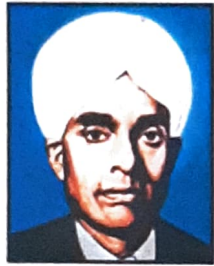


RAO BAHADUR V. A. ANIGOL

## FOUNDER LIFE MEMBERS



SHRI S.S. BASAVANAL



SHRI M.R. SAKHARE



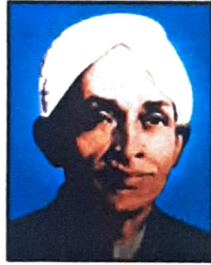
SHRI B.B. MAMADAPUR



SHRI H.F. KATTIMANI



SHRI P. R. CHIKODI



SHRI B. S. HANCHINAL



SHRI V. V. PATIL

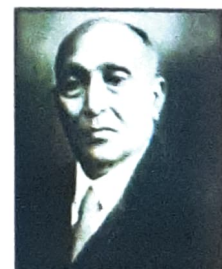
## DONORS



SHRI LINGARAJ SARDESAI



SHRI B.V. BHOOMARADDI



SHRI RAJA LAKHAMAGOUDA



## KARNATAKA LINGAYAT EDUCATION SOCIETY, BELAGAVI



**Dr. PRABHAKAR KORE, M.P**  
Chairman,  
K.L.E. Society, Belagavi

The K.L.E. Society was established by selfless and dedicated services of seven teachers revered as the 'Saptarshis', Shri P. R. Chikodi, Shri S. S. Basavanal, Shri V. V. Patil, Shri B. B. Mamadapur, Shri H. F. Kattimani. They had the vision and foresight for the upliftment of the downtrodden and the illiterate. At that time, a large chunk of people in North Karnataka had no access to the formal education. These seven dedicated visionaries determined to eradicate illiteracy by starting an educational institution. Their efforts were further nourished and nurtured by the founder members, Rao Bahadur R.C.Aratal, Sardar V.G.Naik of Chachadi and Rao Bahadur V.A.Anigol. The generous donations contributed by Sardar Raja Lakhmagouda Sirdesai of Wantamuri, Shri Lingaraj Sirdesai of Sirasangi and Shri B.V Bhoomaraddi and many others.

The sacred sacrifices, selfless efforts and perennial zeal of these committed visionaries and many others resulted in the genesis of the K.L.E Society in the year 1916. The emblem of the Society lay's special emphasis on the principles of Truth, Love, Service and Sacrifice. To start with, these visionaries established Anglo-Vernacular School (later renamed as Gilaganchi-Aratal School) at Belgaum. In due course of time several educational institutions were added to make it a gigantic educational institution in the whole of the country. Now, the K.L.E Society has 252 plus Institutions under its fold. It is running educational institutions right from Kinder Garten to Post-Graduation in Arts, Commerce, Science, Management, Agriculture, Technical and Medical fields.

K.L.E Society has achieved horizontal and vertical growth under the dynamic Chairmanship of Dr. Prabhakar Kore who has put the K.L.E. Society on the global map. With changing global scenario K.L.E. Society has well-equipped itself to meet any challenges in the field of education.



# KARNATAKA LINGAYAT EDUCATION SOCIETY, BELAGAVI.

## OFFICE BEARERS AND THE MEMBER OF THE BOARD OF MANAGEMENT

### PRESIDENT

Shri.S.H.Koujalgi, B.Com, LL.B, Ex-M.P., Bailhongal.

### VICE PRESIDENTS

1. Shri. S.S.Belagavi, Shivaganga, 40, Vishveshwar Nagar, Hubballi
2. Shri M.C. Kolli., B.A., Jayadev nagar, Haveri-581110.

### MEMBERS OF THE BOARD OF MANAGEMENT

- |  |               |
|--|---------------|
| 1. Dr. Prabhakar B.Kore, M.P.,<br>B.C. 92 Casa Ajmer, Church Road, Camp, Belagavi-590009   | Chairman      |
| 2. Shri.Ashok G.Bagewadi, B.A, B.Com.,<br>562, Dalal Peth, Nipani-591237, Tal: Chikodi, Dist. Belagavi                                 | Vice-Chairman |
| 3. Shri Mahantesh M, Kavatagimath, MLC<br>Guruwar Peth, Chikodi-591201, Dist. : Belagavi   | Member        |
| 4. Shri Amit P Kore, B.E., M.B.A,<br>B.C. 92, CASA AJMER, Curch Road, Camp, Belagavi-590009  | Member        |
| 5. Shri Shrishailappa C Metgud, B.Com,<br>Cotton Merchants, Bharat Oil Mills, Bailhongal-591102. Dist. Belagavi                        | Member        |
| 6. Shri Jayanand M Munavalli,<br>Somawar Peth, Gokak-591307, Dist. Belagavi  | Member        |
| 7. Shri Shankaranna Ishwarappa Munavalli,<br>"Shiddhaling Krupa", Deshpande Nagar, hubballi-580029.                                    | Member        |
| 8. Shri Basavaraj R Patil, B.A<br>At : Kungatoli, Post : Bambalwad, Tal: Chikodi, Dist. Belagavi                                       | Member        |
| 9. Dr. Vishwanath I Patil, M .B.B.S,<br>A/P Belwaadi - 591104, Tq. Bailhongal, Dist. Belagavi  | Member        |
| 10. Shri Yallangouda S Patil, M.A KAS, (Rtd),<br>Plot No. 2826, Sect. No. 12, Old Post Office Road, Shrinagar, M.M. Extn., Belagavi-16 | Member        |
| 11. Shri Anil. Vijayabasppa Patted, B.com.<br>Plot No. 664, Sector No. 5 Near Sai Temple, Shrinagar, M.M. Extn., Belagavi-16.          | Member        |
| 12. Dr. Virupaxi S Sadhunavar, M.B.B.S.,<br>Mahantesh Nursing Home, Bailhongal-591102, Dist. Belagavi                                  | Member        |

### NOMINATED FROM THE CATEGORY OF LIFE MEMBERS FOR A PERIOD OF 2<sup>1</sup>/<sub>2</sub> YEARS

- |   |        |
|---|--------|
| 13. Shri Shivanand D. Shiragave, M.A, B.Ed<br>Principal, KLE Society's English Medium School, Jule-Solapur                      | Member |
| 14. Dr. Mahadev T. Kurani, M.Sc, Ph.D<br>I/c. Principal & associate Professor in Chemistry, KLE Society's B.K. College, Chikodi | Member |
| 15. Smt. Sudha A. Raddi., M.Sc, (N) M.Phil, Ph.D.<br>Principal, KLE Institute of Nursing Sciences, Belagavi-590010.             | Member |

### SECRETARY

: Dr. B. G Desai, M.Pharm.,Ph.D  
Principal, KLE College of Pharmacy, Bangalore,

### CO-ORDINATOR

-KLE English Medium School

: Dr. (Mrs.) Preeti K. Doddwd, M.D.S.  
Professor, Dept. of Conservative Dentistry,  
KLE Vishwanath katti Institute of Dental Sciences, Belagavi

### CO-ORDINATOR

: Dr. B.C. Bannur., M.Com., Ph.D.  
Retired Life Member, K.L.E. Society, Belagavi

Secretary, Board of Management,  
K.I.E. Society, Belagavi





**K. L. E. Society's  
SHRI MRITYUNJAYA COLLEGE,  
DHARWAD**

**LOCAL GOVERNING BODY**

1. Dr. V. I. Patil -- Chairman's Nominee
2. Shri C.V. Basavanal, Dharwad -- Chairman
3. Shri Karan S. Dodwad, Dharwad -- Member
4. Shri Yellappa Parappa Madnur, Dharwad -- Member
5. Shri Devendrappa S. Maralappanavar, Dharwad -- Member
6. Shri Shankarling B. Shivalli -- Member
7. Shri Mallesh V. Hosur -- Member
8. Secretary. Board of Management, -- Member  
K.L.E. Society, Belagavi / Representative
9. Prof. V.V. Patil, Principal, Shri Mrityunjaya Arts -- Member  
& Commerce College, Dharwad Secretary

**\*\*\***



## **INSTITUTION'S QUALITY POLICY**

- \* STUDENTS ARE THE 'NUCLEUS'  
AROUND WHOM ALL OUR ACTIVITIES  
ARE FOCUSED.
- \* IGNITING IN THE STUDENT THE  
DESIRE TO LEARN-IS OUR PASSION
- \* COMPREHENSIVE PERSONALITY  
DEVELOPMENT OF THE STUDENTS TO  
MOULD THEM AS RESPONSIBLE CITIZENS.
- \* PERENNIAL QUALITY IMPROVEMENT.





## TEACHING STAFF

*I/c. Principal*  
**Prof. V.V. Patil, M.Com.**

### **Kannada Dept**

Prof. B.A. Benni, M.A., M.Ed., M.Phil., PGDHE  
Prof. (Smt.) Ashalata S.H. M.A. B.Ed., PGDC

### **English Dept**

Prof (Smt). S.R. Kulkarni, M.A.

### **Hindi Dept**

Dr. (Smt). K.P. Bikkannavar, M.A., Ph.D.

### **Commerce Dept.**

Prof. V.V. Patil, M.Com.  
Prof. G.B. Hallur, M.Com.  
Prof. (Smt.) Shweta Hiremath, M.Com.  
Smt. Shilpa M. Danappanavar, M.Com.

### **Economics Dept.**

Dr. (Smt.) N.C. Patil, M.A., M.Phil, Ph.D.  
Dr. (Smt.) R.G. Kadpatti, M.A., M.Phil., Ph.D

### **Political Science Dept.**

Prof. R.B. Jadhav, M.A.  
Prof. D.A. Shinghi, M.A.

### **History Dept.**

Smt. T.B. Nadaf, M.A.

### **Sociology Dept.**

Prof. M.H. Patil, M.A., M.Phil., B.Ed.

### **Statistics Dept.**

Prof. (Smt.) P.M. Hegde, M.Sc.

### **Dept. of Sports**

Shri S.C. Akki, B.P.Ed., M.P.Ed.  
(Physical Director)

### **Computer Dept.**

Prof. S.V. Hublikar, M.Sc., (C.S.), M.Phil.  
Prof. (Miss) Shilpa Kongi, MCA.

### **Library Dept.**

Shri R.C. Umarani, B.Com., M.L.I.S., M.Phil.

### **Non-Teaching Staff**

Shri R. D. Biradar, Superintendent  
Smt. J.M. Revadi, B.A., F.D.A.  
Smt. V.R. Karki, F.D.A.

Shri B.R. Badiger, Peon

K. L. E. Society's  
**SHRI MRITYUNJAYA COLLEGE, DHARWAD.**  
**- A Glimpes**

Our College was established by His Holiness Shri mahant Swamiji and named after his holiness Shri Mrityunjaya Swamiji of Murughamath, Dharwad in 1973 and later was brought under the fold of the professionally managed K.L.E. Society, Belgaum in 1975.

The college takes pride to have been the pioneer institution in getting the accreditation by the NAAC. This exclusive degree college focusses to impart quality education to the students with rural background. The institution is centrally located and has well-equipped infrastructure, qualified faculty driven by innovations. We aim at moulding the student through need based coaching and training so as to make him/her a better, self reliant, responsible citizen.

**WORKING HOURS:**

The college functions as per the following schedule.

Classes : 9-30 am to 5-30 pm

Office : 9-30 am to 5-30 pm

Library : 9-30 am to 5-30 pm

**COURSES**

The College is affiliated to Karnatak University, Dharwad and imparts education in Arts and Commerce faculty for under-graduate student leading to the award of B.A. and B.Com. BBA, BCA degree by Karnatak University, Dharwad.

**ELIGIBILITY:**

**B.A 1 Semester:**

The students who have passed PUC IIInd year / JOC / equivalent courses.

**B.Com 1 Semester:**

The students who have passed PUC IIInd year Commerce / Science / JOC or equivalent Courses.

**Assessment of Students Performance:**

In addition to the University examination and evaluation, the college has designed the assessment of students performance in both academic and non-academic fields. This method aims at enabling the student to prepare for future challenges. The methodology of assessment includes conducting periodical tests, seminars, group discussions, projects, home assignments and participation in Collegiate and Inter-collegiate competitions.



## BA (Semester Scheme)

Scheme of introduction for First Semester to Sixth Semester.

### A) Group -I

Language :

1. English
2. Kannada/Hindi.

### B) Group-II -

**Optional Subjects for Arts :**

1. History, Economics, Political Science
2. History, Sociology, Political Science,
3. Economics, Sociology, Political Science
4. History, Sociology, Kannada
5. History, Political Science, Kannada
6. History, Economics, App. Statistics
7. History, Political Science, Hindi
8. History, Economics, Kannada

### C) Group -III

**Additional Subjects**

- First Semester : Indian Constitution  
Second Semester : Human Rights and Environment Studies.  
Third Semester : Personality Development and communication Skills  
Fourth Semester : Computer Application

## B.Com (Semester Scheme)

Scheme of introduction for First Semester to Fourth Semester.

### **FIRST SEMESTER**

1. Basic English
2. Kannada /Hindi

**Core Subjects:**

3. Financial Accounting - I
4. Principles of Management
5. Business Environment
6. Managerial Economics-I

**Compulsory Subject:**

7. Indian Constitution

## **SECOND SEMESTER :**

1. Basic English
2. Basic Kannada or Hindi
3. Financial Accounting - II
4. Business communication Skills.
5. Entrepreneurship Development and Small Enterprise Management.
6. Managerial Economics-II
7. Fundamental of Computers

### **For Non-Commerce Students**

1. Fundamentals of Accounting-II
2. Fundamentals of Commerce-II

## **THIRD SEMESTER :**

1. Corporate Accounting-I
2. Principles of Marketing
3. Secretarial Practice
4. Human Resource Management.
5. Monetary Economics
6. Business Statistics  
(Those who have not studied statistics at PUC) OR  
Commercial Arithmetic  
(Those who have studied statistics at PUC)
7. Computer application-I

## **FOURTH SEMESTER :**

1. Corporate Accounting-II
2. Law and Practice of Banking
3. Fundamentals of Financial Management
4. International Financial Systems
5. International Economics
6. Business Statistics. OR Commercial Arithmetic.
7. Computer Application-II

## **FIFTH SEMESTER :**

1. Cost Accounting-I
2. Income Tax-law & Practice-I
3. Principles & Practice of Auditing
4. Indian Economics.
5. Computer Applications (RDBMS & E-Business Applications)  
One of Following Elective Group
  - A. Financial Services & Accounting Theory
  - B. Financial Services & Retail marketing
  - C. Financial Services & Human Resource Planning & Development
  - D. Retail marketing & Human Resource Planning & Development
  - E. Bank management & Principles of insurance
  - F. Advanced Statistics-I & Advanced Statistics-II



## **SIXTH SEMESTER :**

1. Cost Accounting-II
2. Income Tax-law & Practice-II
3. Business Laws
4. Industrial Economics
5. Computer Applications in Business
6. One of Following Elective Group
  - A. Principles of Foreign Exchange & management Accounting
  - B. Principles of Foreign Exchange & Service Marketing
  - C. Principles of Foreign Exchange & Industrial Relations
  - D. Service marketing & Industrial Relations
  - E. Banking in India & Insurance
  - F. Advanced Statistics-I & Advanced Statistics-II

### **U.G.C. Assisted Career Oriented Programme Global Skills Enhancement (GSE)**

#### **Objective :**

To increase employment /self-employment opportunities for under-graduate students by equipping them with knowledge of communication and problem solving, through training.

The course will also equip the students to face the competitive examinations and seek admission to higher courses like MBA.

#### **Target Group :**

Students studying in course like BA/B.Com/B.Sc./B.C.A./B.B.A. etc.

#### **Nature of the course :**

Students can take this course along with their degree studies. Focus is on multidisciplinary learning such as Communication Skills, Analytical Skills and basic Computer Skills.

**Batch Size :** There will be only 30 students per batch.

**Certificate Course in GSE :** 4 hrs per week

**Paper-I :** introduction to soft skills - paper-I

**Paper-II :** Introduction to soft skills-paper-II

Scheme of Examination for paper I and paper-II

Internal/Practical Marks                      25

Written Examination                              75

**Total 100 Marks**

Written examination will be conducted at the end of each Semester

**Fees :** Rs. 900 for the Certificate course (Both semesters included)

**Faculty :** Expert Faculty from Industry will be involved.

**Note :** Students can join Diploma and Advanced Diploma Courses after the Certificate / Diploma course.

*Admission is open for the course.*

\*\*\*\*\*

## STUDENT SUPPORT SERVICES

### Scholarship and Fee Concession :

Several types of scholarships of both Central and State Governments such as Post-matric scholarships, SC/ST scholarship, Defence scholarship, etc. can be availed by the eligible student. They are also eligible to get institution scholarships like students welfare cash prize, Students Aid fund endowment Cash prizes etc.

- 1] The college also gives UGC sponsored monthly stipend to the non-creamy layer SC, ST, OBC and minority students. This facility is first given to the final year students based on their academic performance. If students are not available, the facility may be extended to the second and first year students respectively.
- 2] The College provides UGC Sponsored coaching classes for Entry Services Competitive Exams for SC, ST, OBC and Minority students.
- 3] Remedial courses for SC, ST, minorities and OBC students are conducted to bring such students on par with other students.
- 4] UGC Sponsored Career Guidance Facility for students has been introduced in the college.

### Library:

The college has an independent, spacious library with varied and rare collection of more than 32,129 books and various periodicals, journals and news papers on its shelves. All the meritorious and poor students are provided (under PSL) with a set of books till their exams are over.

### Best user of the Library :

An award is given to such of the students who makes Best use of the Library facilities. It is selected by the Library Committee on the basis of variety of books referred to, and the review there of given to the Librarian by the students.

### Computer Lab

The college has Home state-of-art computer lab. There are sufficient number computers with higher end configurations, with latest Software's and operating systems. There is Central Internet Network facility for the students.



### **Gymkhana and Sports**

The Gymkhana Department provides facilities in the field of sports and games to the students. It has multigym, table tennis as well as indoor games facilities. The interested students are personally supervised and coached by the qualified and experienced Physical Education Director.

### **Youth Red Cross :**

Youth Red Cross Unit has been established to create an awareness on the care of health, to understand and accept civic responsibilities, to develop spirit of service and sense of duty with dedication and devotion in the minds of youth and to foster better friendly relations with all without any discrimination.

### **Scouts and Guides :**

Scouts Guides unit, a voluntary, non-political educational movement for young people, open to all without any distinction of origin, race, creed on principles conceived and laid down by the founder Lord Baden Powell has been established to contribute to the development of young people in achieving physical, intellectual, emotional, social and spiritual potentials as individuals, as respectable citizens and as members of local, national and international community.

### **N.S.S**

The N.S.S unit of the college with a capacity to enroll 100 volunteers provides ample opportunities and experiences to the students to involve themselves in various community service programmes. The NSS annual camps are arranged during the mid-term vacation.

### **Career Guidance, Counseling and Students Grievance Redressal Cell**

Career guidance and counseling on higher education and opportunities to the students is provided by trained staff. There is a student grievance redressal cell which attends to the grievances of the students. The students can submit their grievances either directly to the cell or put them in the suggestion box kept in the office, library and ladies room.

### **Health Care Unit**

A healthy mind in a healthy body'. A team of qualified doctors visit our institution, every month to attend to the health problems of the students, free of charge. Purified drinking water facility is also provided to the students.

### **Parents Teachers Association**

The association meets twice in an academic year with an objective of further improvement of their wards. It also plans for the institutional development.

### **Alumni Association**

All the students who pass out from the college become the members of the association. The association meets twice in the year and they constantly work and guide for the progress of the students and the institution.

### **Students Association**

The students' activities are classified into Gymkhana department and Cultural Association. Two students from each class are nominated as the representatives on the basis of marks scored in the previous examination.

### **Code of Conduct :**

1. 85% of attendance to the classes is compulsory for the students, otherwise, such of the students will not be allowed to appear for their annual exams.
2. Wearing of badge and carrying identity card, issued by the college, is a must.
3. Students should be present in their respective class rooms in time. Late comers are not allowed.
4. Students indulging in indiscipline activities, bringing outsiders to the college is strictly prohibited.
5. Students must go to the Library whenever they do not have lecture.
6. Students availing fee concession facility must be prepared to pay entire fees at the end of the academic year if the grant from the government is not received.
7. Gymkhana facility is provided between 12.00 noon and 4.00 p.m.

\* \* \* \* \*

***Details of Fees to be paid on  
Admission may be obtained from the  
College Office.***



K.L.E.Society's  
**Shri Mrityunjaya College of Arts & Commerce, Dharwad**  
**PROVISIONAL CALENDAR FO THE ACADEMIC YEAR 2016-17**

**Odd SEMESTER 2016-17**  
(For I, III, V - SEMESTERS)

**1st Semester :**

- |  |                          |
|--|--------------------------|
| 1. Re-opening of Odd Sem                               | 15th June, 2016          |
| 2. Commencement of the Classes for I, III & V Semester | 1st July 2016            |
| 3. Induction programme                                 | July 3rd Week            |
| 4. Inauguration of Sports & Cultural Associations      | August 1st Week          |
| 5. Parents Meet  | August 2nd Week          |
| 6. Association Activities                              | July - September         |
| 7. 1st Internal Test                                   | September 2nd Week       |
| 8. Seminars and conferences :                          | July - September         |
| 9. Alumini Meet :                                      | September 4th Week       |
| 10. 2nd Internal Test                                  | October 3rd Week         |
| 11. Annual Sports Meet                                 | October 4th Week         |
| 12. Display of I.A. marks                              | October 4th Week         |
| 13. Last working Day of the Odd Semester               | 28th October 2016        |
| 14. Semester End Examination                           | 10-11-2016 to 20-12-2016 |

**Even SEMESTER 2016-17**  
(For II, IV - SEMESTERS)

- |                                     |                           |
|-------------------------------------|---------------------------|
| 1. Re-opening of Even Sem           | 21st December 2016        |
| 2. Association Activities           | January to March 3rd Week |
| 3. Capacity Enhancement Programmes  | January 4th Week          |
| 4. 1st Internal Test                | February 3rd Week         |
| 5. Minor & indoor Games             | February 4th Week         |
| 6. 2nd Internal Test                | March 4th Week            |
| 7. Annual Day                       | April 1st Week            |
| 8. Display of Internal Marks        | April 2nd Week            |
| 9. Last Working Day of the Even Sem | 20th April 2017           |
| 10. Semester End Examination        | 21-04-2017 to 18-05-2017  |



COMPUTER LAB



READING ROOM

**SHRI MRITYUNJAYA COLLEGE OF ARTS AND COMMERCE**

**DHARWAD - 580 008**

Phone : 0836-2442447, fax : 0836 - 2741375 E-mail : [smcollegedhawad@gmail.com](mailto:smcollegedhawad@gmail.com)